



## SOLAR ROAD SAFETY PRODUCTS



[info@bonslight.com](mailto:info@bonslight.com)  
[www.bonslight.com](http://www.bonslight.com)

**Road safety rules are your best tools**

## ABOUT US

# We are a Reputable Company on the Market

We are pleased to introduce ourselves as a Leading Manufacturer, Supplier and Exporter of LED base Emitting Street Light Luminary, High Mast & Street Lighting Poles, Solar LED Street Light, Solar Flasher / Blinker, Solar Chevron, Solar Delineator, Solar Road Stud, LED Lantern, Solar Roof Top Power System, Solar Water Pump, Solar Mobile Tower Light etc...

We have been established in 2001 in Indian Market with product like Inverter, Online UPS & other electronics products recognized as foremost solution provider in electronics & lighting technology.

In the year 2005, the name of the firm was changed to “**BONS LIGHT**” and made a better platform to cover wide area of electrical lighting equipments in India where the infrastructure developments are taking place in broader way in recent years, gives us many opportunities for new designs, R & D and manufacture of lighting products.

We owe well equipped workshop with almost all required manufacturing and lab testing facilities within factory premises.

We really take proud to have technical team comprising well experienced engineers and technicians enabling us to carry out any type of difficult operations.

## VISION

We are serving a number of well known clients all over the world with our preset vision. Our vision is to achieve the highest quality standards in all manufactured products. All of our products must give excellent performance. Understanding our valued customer's budget affordability, we deliver them products at very cost effective prices. Furthermore, we have involved the following into our vision.

Upto the mark services to match customers expectation. Implementing Current Trends and Technologies.

We have recruited a team of highly qualified professionals, which helps us in carrying out the various activities of the business. These professionals have vast industry experience and expertise in the domain. They work in close proximity with one another and understand client's needs and in turn offer them products as per their requirements. Furthermore, these members are sincere and dedicated towards their work and perform the assigned tasks with efficiency. With the combined efforts of our team members, we have been serving a huge number of clients worldwide.



## SOLAR ROAD FLASHER / BLINKER

### SPECIFICATION :

MODEL NO.	SBFDN225	SBFDN325S	SBFDN325	SBFDN330	SBFDN340
Nos. OF LED	61	91	127	169	217
LIGHT BRIGHTNESS	>150CD	>250CD	>250CD	>300CD	>400CD
DISPLAY COLOUR	RED OR AMBER	RED OR AMBER	RED OR AMBER	RED OR AMBER	RED OR AMBER
ACCEPT DIA	200mm	300mm	300mm	300mm	300mm
POWER STORAGE	21VAh	36VAh	43VAh	52VAh	73VAh
SOLAR MODULE	18.5V, 5WP	18.5V, 7WP	18.5V, 10WP	18.5V, 15WP	18.5V, 20WP
WORKING HOURS	24 HOURS @ DAY NIGHT TIME	24 HOURS @ DAY NIGHT TIME	24 HOURS @ DAY NIGHT TIME	24 HOURS @ DAY NIGHT TIME	24 HOURS @ DAY NIGHT TIME
AUTONOMY	2 DAYS MONSOON PERIOD	2 DAYS MONSOON PERIOD	2 DAYS MONSOON PERIOD	2 DAYS MONSOON PERIOD	2 DAYS MONSOON PERIOD
VISIBILITY	300 METERS	500 METERS	500 METERS	600 METERS	700 METERS
WEIGHT	4.500 Kg.	6.00 Kg.	6.500 Kg.	7.00 Kg.	7.500 Kg.
DIMENSIONS	L305 X H325 X D280mm	L390 X H390 X D425mm	L390 X H390 X D425mm	L390 X H390 X D425mm	L390 X H390 X D425mm

### COMMON SPECIFICATION

- Light Source : Super Bright Led Cluster
  - Life Of Led Lamp : 50,000 Hours
  - Display Colors : Yellow, Red
  - Solar Module : Multi Crystalline High Efficiency & Life Of Panel 15 years
  - Power Storage : Latest Integrated Super Cell Technology
  - Enclosure Approx. Dimension : L-360mm, B-485mm, H-460mm
  - Clamp Suitable : For 65 / 75 / 110mm Dia Pole
  - Material : Enclose In Metal Or FRP & Front Glass In Polycarbonate
  - Flashing Frequency : 50+5% / minute.
  - Working Mode : Flashing All The Day & Night.
- Activation Switch On / Off & Auto Dusk To Dawn For Night Mode High Efficiency  
PWM Charge Controller

### FEATURE

- Shatter resistant solar modules
- Self contained system
- Utilizes LED technology Available remote wireless control / cell phone. (Optional)
- Timed or continuous configurations
- Maintenance free Systems
- Plug in Play
- In This Supper cell Technology Power Storage Capacity & More Life Cycle
- No need to have utility power lines installed
- No monthly or annual power bill
- Proven technology
- Quick and easy installation - can be installed in almost any location in 2 hours
- No light bulbs to replace
- Convenient in installation, no wires to embed underground.
- CLEAR VISIBILITY IN hazy atmosphere

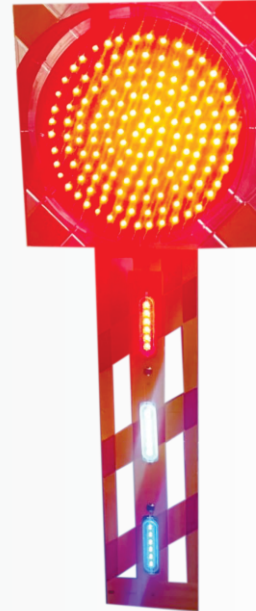
### APPLICATION

Used for warning road users at Diversion, Road construction, work zone, Sharp Curve warning, Crossings School Crossing, Vehicle inspection station, Fire house entrance, Factory plant Pedestrian crossing(Crosswalk), Underground Railway Crossing, Port, Sez Dangerous area where wiring not easy.



## ACCIDENT AVOID TRAFFIC BLINKER / FLASHER :

### ELECTRIC/SOLAR HI FLASHING ACCIDENT AVOID LIGHT FLASHER / BLINKER



### KEY FEATURES- ACCIDENT AVOID TRAFFIC BLINKERS

- Accident Avoid High Fast Power Blinkers
- Blinkers are used extensively by the Authorities at Accident vulnerable locations.
- Diverging points, un signalized intersection, turns, Blind spots etc. to warn the motorists to slow down to avoid accidents.
- Attention to your surroundings and stay alert.
- High-performance adaptive traffic control system designed to optimize traffic flows



### FOG LIGHTS KEY FEATURES

- Fog lights are designed to aid visibility when bad weather conditions reduce your ability to see the road ahead
- Attention to your surroundings and stay alert.
- Stay safe on the road
- Fog lights provide better visibility on the road during fog and other unfavorable conditions.
- Fog light are a safety feature that are intended to illuminate the surface and verges of the road and aid to better visibility while driving in



## SOLAR CHEVRON

MODEL NO.	SCN1AR	SCN1AR DN	SCN3AR	SCN3AR DN
Nos. CLUSTER OF LED	78	78	117	117
DISPLAY COLOUR AVAILABLE	RED OR AMBER	RED OR AMBER	RED OR AMBER	RED OR AMBER
BATTERY CAPACITY	36VAh	43VAh	43VAh	52VAh
CHARGING TIME	4 Hours @Sun Light	4 Hours @Sun Light	4 Hours @Sun Light	4 Hours @Sun Light
SOLAR MODULE	Crystalline Silicon	Crystalline Silicon	Crystalline Silicon	Crystalline Silicon
CAPACITY	12V, 10WP	12V, 12WP	12V, 15WP	12V, 20WP
SIZE	600 x 400	600 x 400	750 x 450	750 x 450
WORKING HOURS	12 Hours @ Night Time	24 Hours @ Day Night Time	12 Hours @ Night Time	24 Hours @ Day Night Time
AUTONOMY	3 Days Monsoon Period	2 Days Monsoon Period	3 Days Monsoon Period	2 Days Monsoon Period
VISIBILITY	500 Meters	500 Meters	500 Meters	500 Meters
WEIGHT (APPROX.)	8.5 Kg.	13.5 Kg.	9.2 Kg.	14.2 Kg.

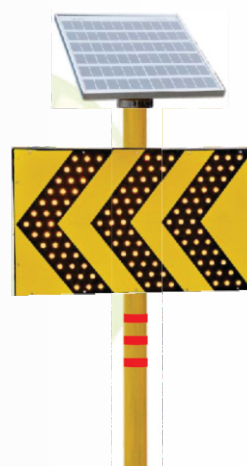
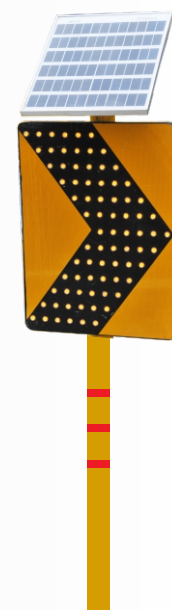
### FEATURE

- Solar Module : Crystalline Silicon Solar Panel
- Inbuilt in Long-life Maintenance free battery
- High Efficiency PWM base charge controller for system protection
- Charging time 4 Hours @ sun light
- Three moving arrows with high intensity ultra bright LEDs.
- Integrated design for maximum energy efficiency
- Warning Distance : 500 mtr
- Housing Material : Foam PVC MS powder coated frame
- Automatic dusk to dawn operation or optional switch on/off
- Autonomy : 2 or 3 Days
- Anti theft mounting arrangement
- No power cost, Power charge from the sun directly.

No wire and no power supply problem. It's convenient to install it anywhere in right or left direction, Flashing frequency Approximately 60per minute, according to the arrow direction glitters clamp suitable for 75mm dia pole

### APPLICATION

- Diversion at road constructions, roundabouts highway intersections
- Tunnel entrance, approach to over / under bridges
- Curved roads, Sharp Curves, hair pin bends
- For turning corner guidance.
- Exit and entry direction

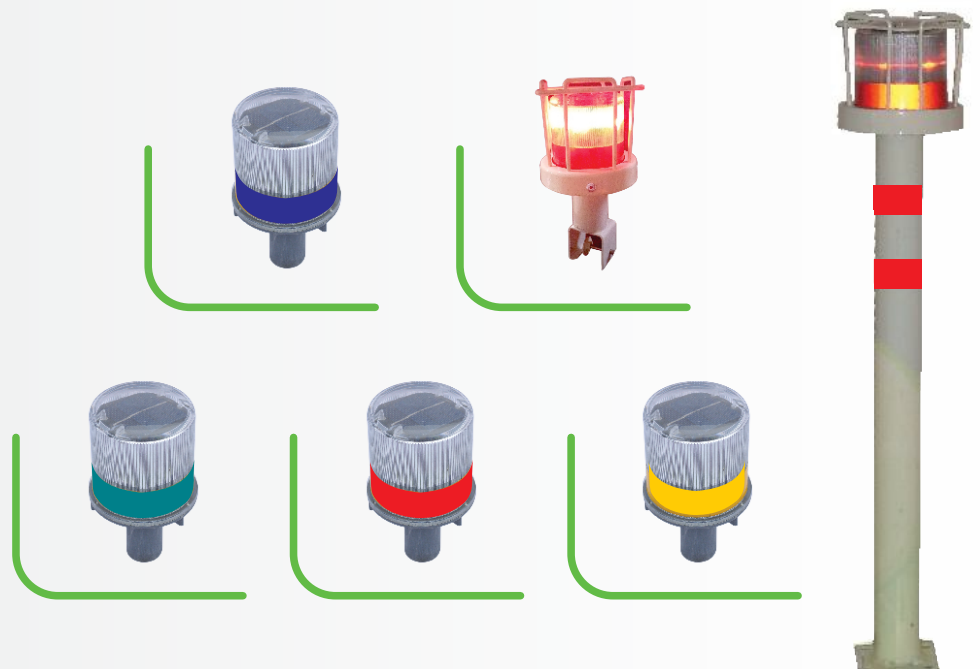


## SOLAR DELINEATOR (SOLAR WARNING LIGHT)

FEATURE	SPECIFICATION :	
	MODEL NO.	SDR 4L
6 ultra bright flashing LEDs	Nos. CLUSTER OF LED	6 LEDs
High efficiency inbuilt solar panel to maximize sun absorption	LIGHT BRIGHTNESS	20 CD
Inbuilt battery & battery life - 3 Years	COLOUR AVAILABLE	RED, AMBER, GREEN, BLUE & WHITE
Special anti-theft MS grill (optional) with pole	BATTERY CAPACITY	1.2V 1500mAH Ni-MH / Ni-CD rechargeable
<ul style="list-style-type: none"> <li>Water proof, Weather proof polycarbonate body</li> <li>Pole mounting arrangement.</li> <li>Backup time 36 Hrs. on fully charge.</li> <li>Operating Temperature -10 to 60 C</li> </ul>	CHARGING TIME	4 Hours @ Sun Light
	SOLAR MODULE	Crystalline Silicon Solar
	CAPACITY	2 Volt 180mA
	SIZE	Height 160mm, Diameter 92mm
	WORKING HOURS	12 Hours @ Night Time
	AUTONOMY	3 Days Monsoon Period
	VISIBILITY	300 Meters
	WEIGHT (APPROX.)	0.250 kg
	FLASHING FREQUENCY	75 ± 5
<b>BENEFIT</b>		
<ul style="list-style-type: none"> <li>Works on solar energy and requires no electricity.</li> <li>Compact integrated unit includes solar panel, optics and circuit.</li> <li>Automatic operation from dusk-to-dawn.</li> </ul>		

### APPLICATION

- Mines Area
- Center Lane Division
- Dangerous U-Tuns
- Dangerous Medians
- Construction Zones
- No-Entry Zones
- Multi Lanes
- Center Verge
- Sharp Curves
- Parking Lots
- High Ways
- T-Zones



Delineators are suitable for all kinds of roads and their reflectors provide best reflective performance that helps in showing road geometry during day night. This feature of our product makes it convenient for drivers and keeps them away from road hazards. Further, these also result in avoidance of accidents.

## SLOAR BATTERY LESS STREET LIGHT

# INTEGRATED SUPER CELL TECHNOLOGY

### TECHNICAL SPECIFICATION :

MODEL NO.	SBL20W	SBL40W	SBL60W
Equivalent LED Lamp Wattage	12 W	16 W	20 W
Light Lumens Output	1200 Lm	1600 Lm	2000 Lm
Solar Panel	20 WP	30 WP	40 WP
Power Storage	150VAh	200VAh	250VAh
Power Usage / Night	50 VA	65 VA	80 VA
Mount on Suitable Height	4.5 Mtr	5 Mtr	6 Mtr
Effective Lighting Coverage Area	14Mtr x 5 Mtr	17Mtr x 6 Mtr	20Mtr x 7 Mtr

### FEATURE :

- Latest Integrated Super Cell Technology
- Highest Efficient Solar Module (Good Performance in Low Sunlight )
- Ultra High Lumens Output LED with 70000 Burning Hours
- Uniform Lighting with Maximum Coverage Area
- Power Storage in 4 to 5 Hours On Normal Sunlight
- Good Performance in Rainy Season
- Dusk to Dawn Operation
- 2 Night Work on Without Sunlight
- Optional : Dimming Facility

### BENEFIT :

#### Total Theft-Proof Product

Total Wireless, No any wiring and No Assembly onsite.

Easy to Install : Pole Mount, Wall Mount, Surface Mount

### APPLICATION :

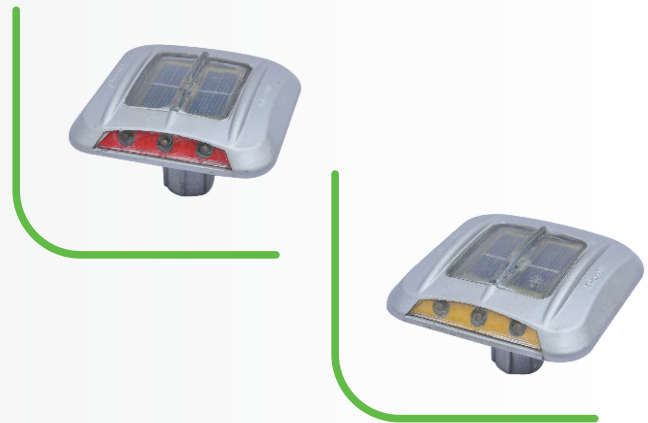
Secondary Road, Pathway, Parking, Garden, Resident Area, Common Plot, Weekend Home, Farm House, Factory, Railway



## SOLAR ROAD STUD :

### TECHNICAL SPECIFICATIONS

Material	:	Aluminum Alloy Shell
Solar Panel	:	2.4V / 0.2 - 0.3 W
Battery	:	Ni-Mh Rechargeable Battery
Charging Time	:	4 to 5 Hours @ Sun Light
Light Source	:	6nos.super bright LED
Light Intensity	:	6000-8000mcd
Bearable Weight / Load	:	15 Tons
Color	:	Red/Yellow/Green/Blue LED
Working Time	:	50-60 Hrs. after full charging
Working Time	:	12 Hours @ Night Time



### KEY FEATURES

- High intensity LED's
- Solar power for isolated or stand alone applications
- Body made up of special aluminum alloy
- Ideal for Highway, Parklot, Raod, etc...
- Available in Red & Yellow colors

### WET ROAD

Conventional reflective markers lose their visibility when the roads are wet. The solar road stud's active illumination remains brightly visible, unaffected by wet conditions.

Foggy conditions  
High intensity LED spotlight penetrate fog to help the drive to negotiate curves.

Dark Rural Roads  
Illumination from the solar road stud can eliminate the need for street lighting while maintaining safe driving component.

Mountain Roads  
Help to show approaching sharp turns and blind curves at night time.

## SOLAR / ELECTRIC AVIATION LIGHT

### TECHNICAL SPECIFICATIONS

#### LIGHT SOURCE

Type of Aviation Light	:	Flashing Mode
Light Source	:	Ultra Bright/High Intensity LEDs
Display Colors	:	Red & Amber (Yellow)
Intensity	:	up to 400 CD
Horizontal Spread	:	360 Degree

#### OPERATION

Working Time	:	10 - 12 Hours at Night
Minimum Autonomy	:	2 Days
Operating Life span of LEDs	:	50,000 Hours
Day Night Control	:	Auto / On / Off Provision in-built

#### SOLAR PANEL

Type : Mono/Multi Crystalline Silicon  
Maximum Power : >10 Wp 12 Volt peak

#### CONSTRUCTION

Lens : UV stabilized Polycarbonate  
Sealing : Fully sealed rugged water proof, Light wight  
Weight : Less than 8 kgs.

#### BATTERY

Type : Sealed Maintenance Free (SMF) Value Regulated Lead Acid battery  
Rating : 06 Volts, 4.5Ah x 2 nos.

#### APPLICATION

Ideal for Power transmission towers and telecom tower, airport Natural obstructions like Hiltops and all other locations where carrying electricity is difficult.





## SOLAR ROOF TOP POWER PLANT SYSTEM

Solar Power Systems are the most common type of solar electric system in the India. This type of system is attached. Electricity that is generated by the solar array flows freely the utility company. The household or commercial property that benefits from the system is credited for the electricity generated by the solar panels. As long as the solar array generators more electricity than the household consumes, the electricity will be free. If the household or business consumes more electricity than is generated, it will be billed for only the excess consumption.



### BENEFITS OF A ROOFTOP SOLUTION

- Lower electricity bills.
- Increase the value of your property.
- Create revenue from unused roof space.
- Hedge against rising utility rates.
- Reduce dependence on foreign oil.
- State & Local - Rebates and Tax Incentives.
- Extend roof warranty.
- Reduce carbon footprint.
- Positively affect your community by producing clean energy.

### APPLICATION :

Install Solar Rooftop At Home, Apartments, Office, Educational Institute, NGO, Industrial Factories, Hospital, Hotel, Mall & Commercial Complex and unused spaces, Toll Plaza & Petrol Pump etc.

### *Company Brief*

*Bons Light  
Established  
in 2005*

*We have  
20 Years of  
experience in  
Solar  
Products*

*We have well  
Educated and  
Good Experienced  
staff in our  
company*

*We have done  
20 MW  
work in  
solar sector*

*We do work  
in all over  
India*

## LIGHTING SYSTEMS

### LED STREET LIGHT LUMINARY

Model No.	EL 9W	EL 12W	EL 15W	EL 24W	EL 36W	EL 48W	EL 72W	EL 96W	EL 120W	EL 144W
Substitute For	40 W CFL	48 W CFL	70 W HPSV	100 W HPSV	120 W HPSV	150 W HPSV	250 W HPSV	250 W HPSV	250 W HPSV	400 W HPSV
Lumens Output	1170 lm	1560 lm	1950 lm	3120 lm	4680 lm	6240 lm	9360 lm	12480 lm	15600 lm	19500 lm
LED Lamp/Emitting Lamp Wattage	9 W High Power	12 W High Power	15 W High Power	24 W High Power	36 W High Power	48 W High Power	72 W High Power	96 W High Power	120 W High Power	144 W High Power
Frequency Range	50 Hz	50 Hz	50 Hz	50 Hz	50 Hz	50 Hz	50 Hz	50 Hz	50 Hz	50 Hz
Power Factor	> .095	> .095	> .095	> .095	> .095	> .095	> .095	> .095	> .095	> .095
Power Efficiency	> 85%	> 85%	> 85%	> 85%	> 85%	> 85%	> 85%	> 90%	> 90%	> 90%
Color Temperature	5000-7000K	5000-7000K	5000-7000K	5000-7000K	5000-7000K	5000-7000K	5000-7000K	4000-7000K	4000-7000K	4000-7000K
Working Temperature	0 °C ~ 60 °C	0 °C ~ 60 °C	0 °C ~ 60 °C	0 °C ~ 60 °C	0 °C ~ 60 °C	0 °C ~ 60 °C	0 °C ~ 60 °C	0 °C ~ 60 °C	0 °C ~ 60 °C	0 °C ~ 60 °C
Input Voltage	AC 120 -265 V	AC 120 -265 V	AC 120 -265 V	AC 120 -265 V	AC 120 -265 V	AC 120 -265 V	AC 120 -265 V	AC 120 -265 V	AC 120 -240 V	AC 120 -265 V
Beam Angle	Horizontal 120° Vertical 60°	Horizontal 120° Vertical 60°	Horizontal 120° Vertical 60°	Horizontal 120° Vertical 60°	Horizontal 120° Vertical 60°	Horizontal 120° Vertical 60°	Horizontal 120° Vertical 60°	Horizontal 120° Vertical 60°	Horizontal 120° Vertical 60°	Horizontal 120° Vertical 60°
Working Voltage	24 VDC	24 VDC	24 VDC	24 VDC	24 VDC	24 VDC	24 VDC	48 VDC	48 VDC	48 VDC
Pole Required For Ground Level	5.0 Meters	5.5 Meters	6.0 Meters	6.5 Meters	7.0 Meters	8.0 Meters	9.0 Meters	9.0 Meters	9.0 Meters	9.0 Meters
Lumination ( Lux in Center)	12	15	18	18	20	20	20	22	25	30

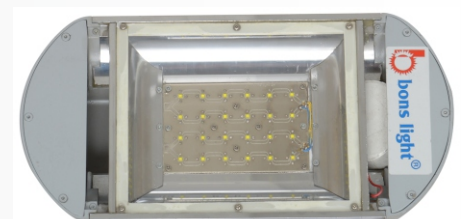
### FEATURES

- Long Life up to 50,000 hours
- High Luminous Efficiency per watt 130 Lumens
- Power Saving up to 60 to 80% against Convention at Light
- Revolutionary Photometric Design
- Uniformity Light Out Put
- Quick Start Operation
- Unique Integrated Lens and Lampshade Design
- No flicker No adverse glare
- No UV or IR, Impact Resistance, Shock-Proof. Work under Low-Voltage and Low-Heat, Safe and Reliable
- Heavy Duty Construction of Alumium Extrusion with three time Heat Distribution Phines more than ordinary pressure Dia Cast Luminary.

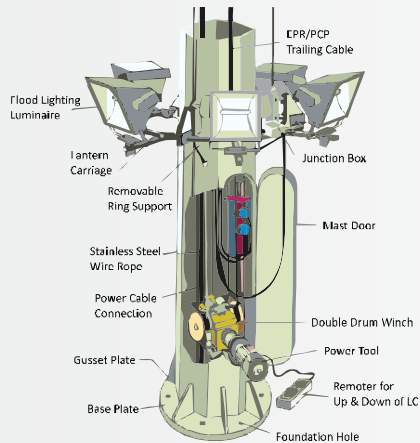


### APPLICATIONS

- Highway Road Lighting
- Industrial Road Lighting
- Street Road Lighting
- Pathway Lighting
- Parking Lighting
- General Out Door Lighting
- Replacement of HPSV, Metal Halide, Mercury, CFL Lighting



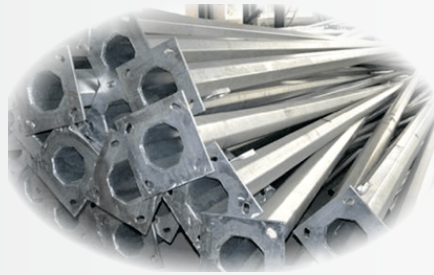
## HIGH MAST & STREET LIGHTING POLES



## OCTAGONAL POLE

### APPLICATION

- Main Junction
- Highways
- Street Road
- Storage Yard
- Area Lighting
- Party Plot



## LED FLOOD LIGHT / HIGH BAY LIGHT

### APPLICATION

- Industrial areas
- Storage yards
- Container berths
- Docks and ports
- Airport aprons
- Flyovers & bridges
- Railway marshaling yards

### FEATURES

- Heavy duty and weatherproof
- Effective asymmetrical beam control
- Relamping from the sides
- Easy to install and maintain
- Powder coated Toggles for glass holding support



**MFG. OF : SOLAR POWER PLANT,  
LED LIGHTS & ROAD SAFETY PRODUCTS**



*“ Success story of Bons Light Pvt. Ltd. ”*



**BONS LIGHT PVT. LTD.**

**OFFICE :**

750, Iscon Emporio, Near Star Bazar, Jodhpur Char Rasta,  
Satellite, Ahmedabad - 380015. Tel. : +91 - 79 - 40032335  
Mobile No. : 81550 54410, 99798 85799

**FACTORY :**

Plot No. 564, Phase II, Nr. Vatva Railway Station,  
G.I.D.C., Vatva, Ahmedabad - 382 445 Gujarat - India.  
Tel. : +91-79-40085253, Mobile : 98250 20385, 99252 44220